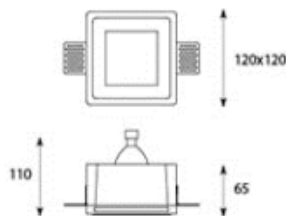
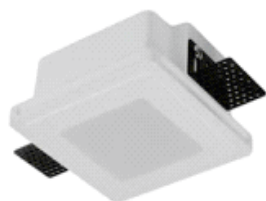


Designer Gypsum Light-Trimless



Model: iLED GPL TD SF1004-33006

PRODUCT DESCRIPTION

The Designer gypsum recessed mount luminaire is made of gypsum/plaster available in the range of 5 W – 20 W. Universal power supply/drivers with input range of 90 V to 270 V AC 50/60 Hz and PF >0.96 are provided. It is ideal for hotel, showroom, home, office, auditorium etc. *Different fixture colours available on request.*

SPECIFICATION

Material	: Gypsum/ plaster milky diffuser & front removable
Mounting	: Recess mount
Power	: 5 W – 20 W
Voltage	: 90 – 270 V AC 50/60 Hz
Power Factor	: >0.96
LED colors	: White 6000-6400 K Neutral White 4000-4500 K Warm White 2700-3000 K
Lumen Flux	: 120-140 lm/W (lumen efficacy: 160 - 180 lm)
Dimension	: L-120 X W-120 X H-65 mm
Cut Out Dimension	: L-125 X W-125 mm
Clip Movement	: 12-24 mm
Driver	: Internal
Operating Temp	: -40°C ~ + 70°C
CRI	: 85
IP Rating	: IP 20
Led used	: CREE ⇄
Dimmable Interface	: CASAMBI , Colour tunable (2700 K – 6000 K), DALI, Edge pulse/0/1-10 V dimming control (optional)

ORDERING INFORMATION

iLED		GPL	33006	W	WW	NW
Brand name	Rated Power	Gypsum Light	Model No.	White	Warm White	Neutral White

The technical specifications may vary due to continuous improvement without prior notice.

*Logos of products and companies are used for reference

www.iled.in

iLED Lighting Systems Pvt Ltd
Chennai - 600096, Tamil Nadu, India