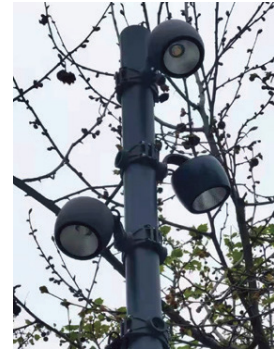
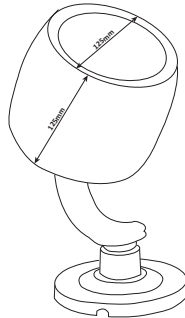


## Garden Pole / Street Light



**Model:** iLED 30/35 PL 670027-4 / GL  
670019-4

### PRODUCT DESCRIPTION

The street light luminaire is made of die cast /Extrusion aluminium With PC Cover and it is available in the range of 30 W to 80 W. Universal power supply/drivers with input range of 90 V to 280 V AC 50/60 Hz and PF >0.96. It is ideal for pole lights / pathway lights. Light Degree Options At Request.

### SPECIFICATION

Material	: Die cast Aluminium with Polished Reflector & Tempered Glass
Mounting	: Spike / Surface / Pole Mount
Power	: 30/35 WATTS
Voltage	: 90-280V AC
LED colors	: WW/NW/W
Lumen Flux	: 3000-4800/3500-5600Lm
Dimension	: D-125 X H-125 mm
IP Rating	: IP67

### ORDERING INFORMATION

<b>iLED</b>	<b>30/35</b>	<b>PL</b>	<b>670027-4</b>	<b>W</b>	<b>WW</b>	<b>NW</b>
Brand Name	Rated Power	Pole Light	Model No.	White	Warm White	Neutral White

The technical specifications may vary due to continuous improvement without prior notice.

\*Logos of products and companies are used for reference

[www.iled.in](http://www.iled.in)

iLED Lighting Systems Pvt Ltd  
Chennai, Tamil Nadu, India 600096