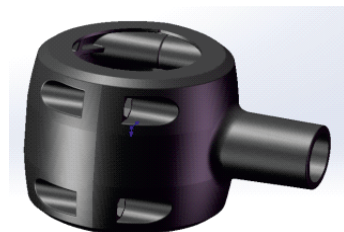


Garden Lights



Model: iLED CLAMP FOR GL 11/12/13

PRODUCT DESCRIPTION

The clamp for the garden luminaire is made of die cast aluminium with milky diffuser. Universal power supply/drivers with input range of 90 V to 270 V AC 50/60 Hz and PF >0.96. Ventilated powder coated die cast aluminium & milky diffuser. It is ideal for garden, gate lights etc.
Different fixture colours available on request.

SPECIFICATION

Material : Ventilated powder coated die cast aluminium & milky diffuser