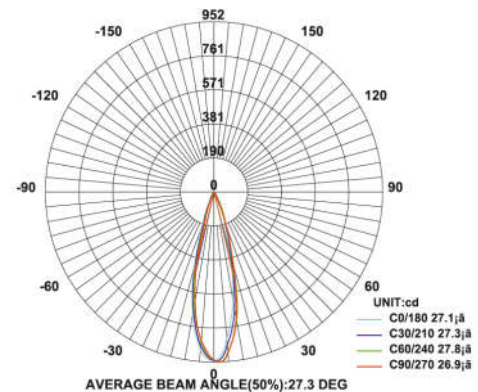
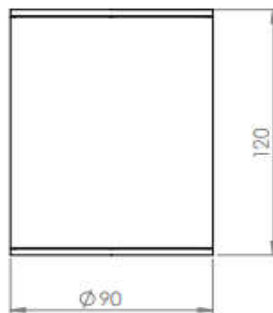


## Surface Mount Down Lights



**Model:** iLED 10 SM RDL 03-3931

### PRODUCT DESCRIPTION

This surface mount luminaire is in the range of 10 and 12W. Universal power supply/drivers with input range of 90 V to 305 VAC 50/60 Hz and PF >0.95. The material used is ventilated cooling aluminum with reflector & tempered glass. It is ideal for hotel, showroom, home, office, auditorium etc.

### SPECIFICATION

Material	: Ventilated cooling aluminum with reflector & tempered glass
Lumen Efficacy	: 160 – 180 lumens
Mounting	: Surface mount
Power	: 10 -12W
Voltage	: 90 – 305 VAC 50/60 Hz
Power Factor	: >0.95
LED colors	: White 6000-6400 K Neutral White 4000-4500 K Warm White 2700-3000 K
Lumen Flux	: 120-140 lm/W
Light angle	: 5°, 10°, 15°, 25°, 30°, 45° & 60°
Dimension	: D-90 X H-120 mm
Driver	: Internal
Operating Temp	: -40°C ~ + 70°C
CRI	: >85
IP Rating	: IP 67
Led used	: <b>CREE</b> ⇄
Dimmable Interface	: <b>CASAMBI</b> , Colour tunable (2700 K – 6000 K), DALI, Edge pulse/0/1-10 V dimming control (optional)

### ORDERING INFORMATION

iLED	10	SM RDL	03	W	WW	NW
Brand name	Rated Power	Surface Mount Round Down Light	Model No.	White	Warm White	Neutral White

The technical specifications may vary due to continuous improvement without prior notice.

\*Logos of products and companies are used for reference

[www.iled.in](http://www.iled.in)

iLED Lighting Systems Pvt Ltd  
Chennai, Tamil Nadu, India 600096